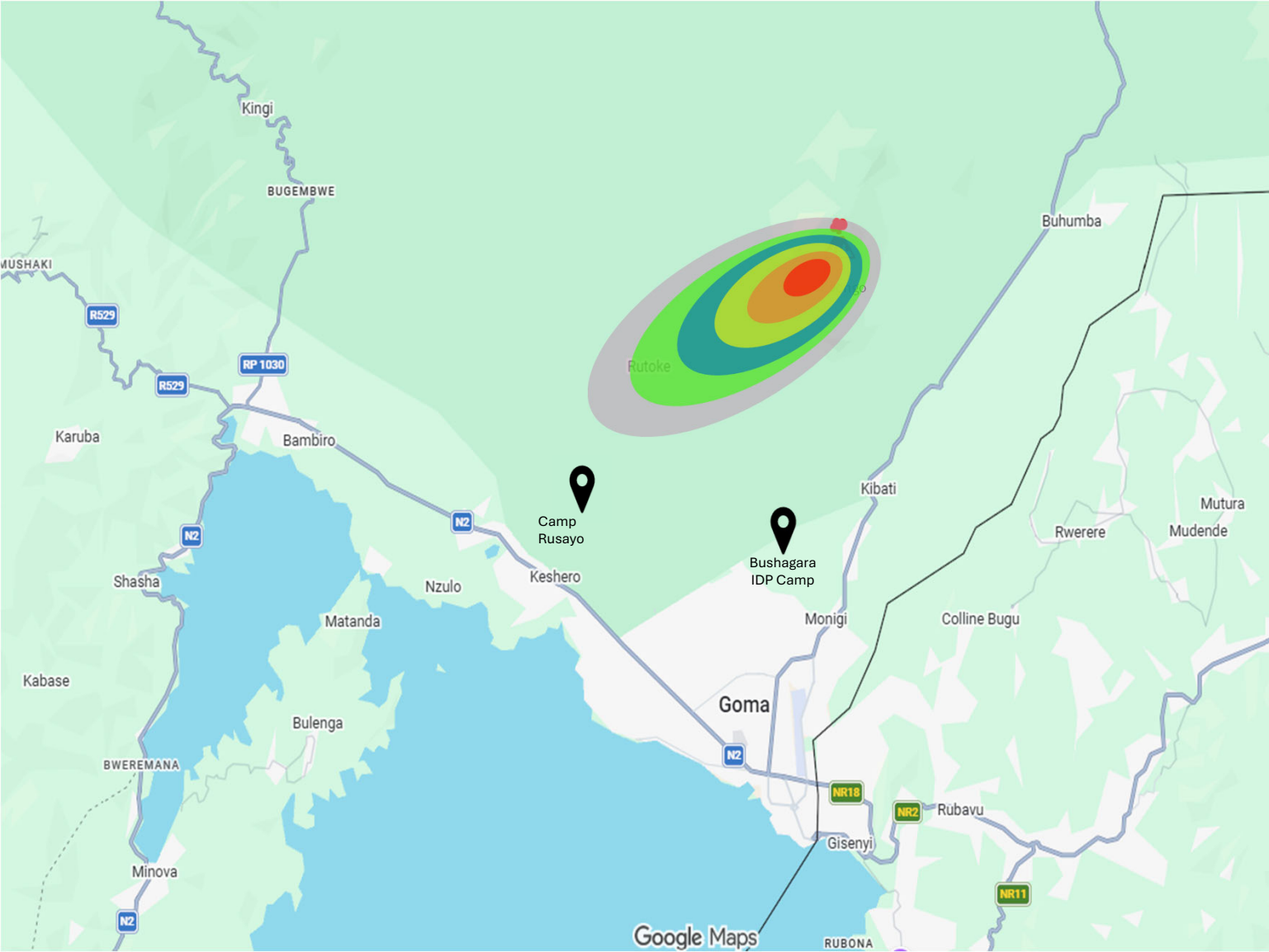


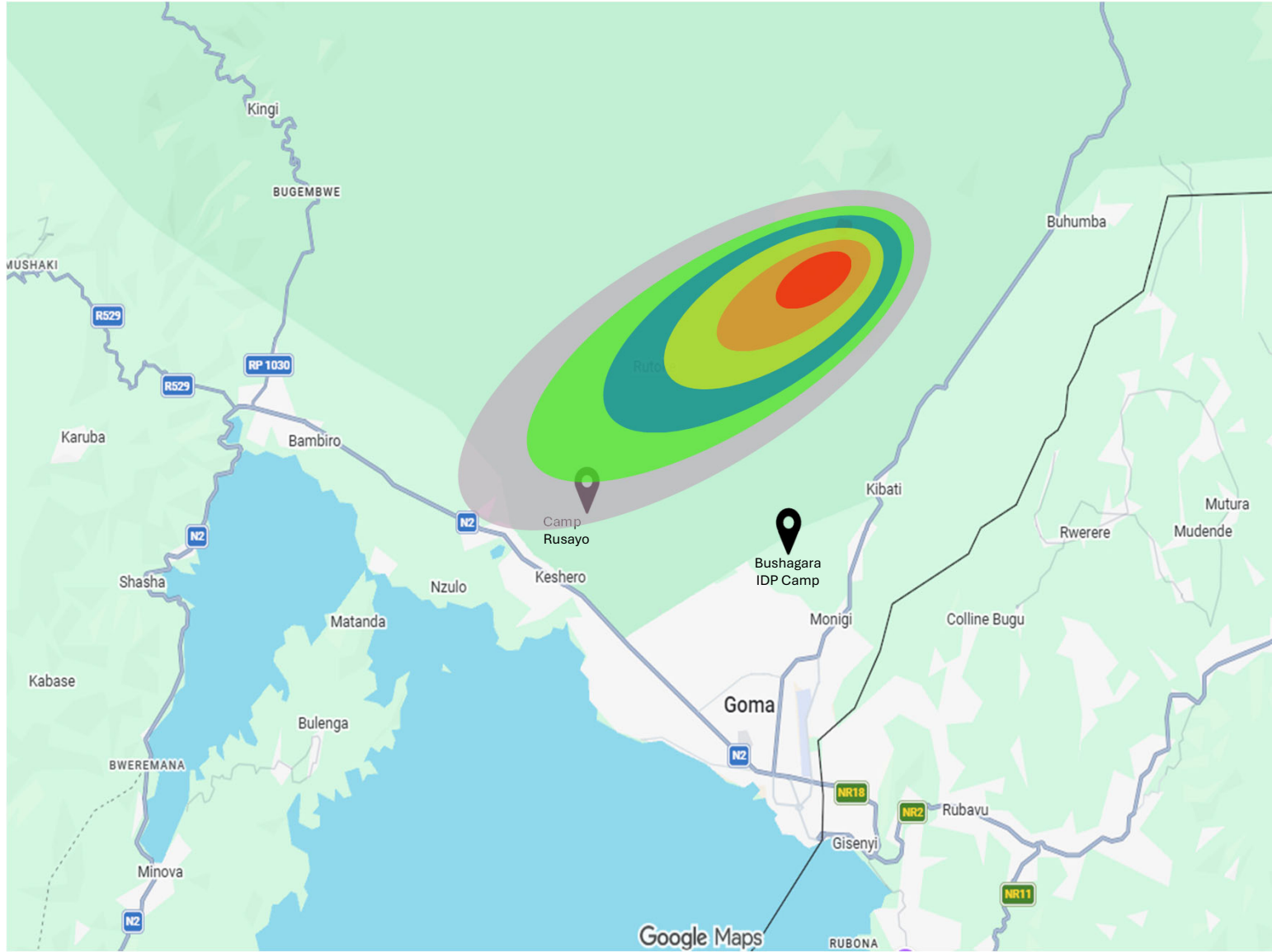
Mt. Niyaragongo  
Plume Dispersal  
1000 (E-day)

Wind at surface: Blowing to  
the WSW @ 6-8 kmh



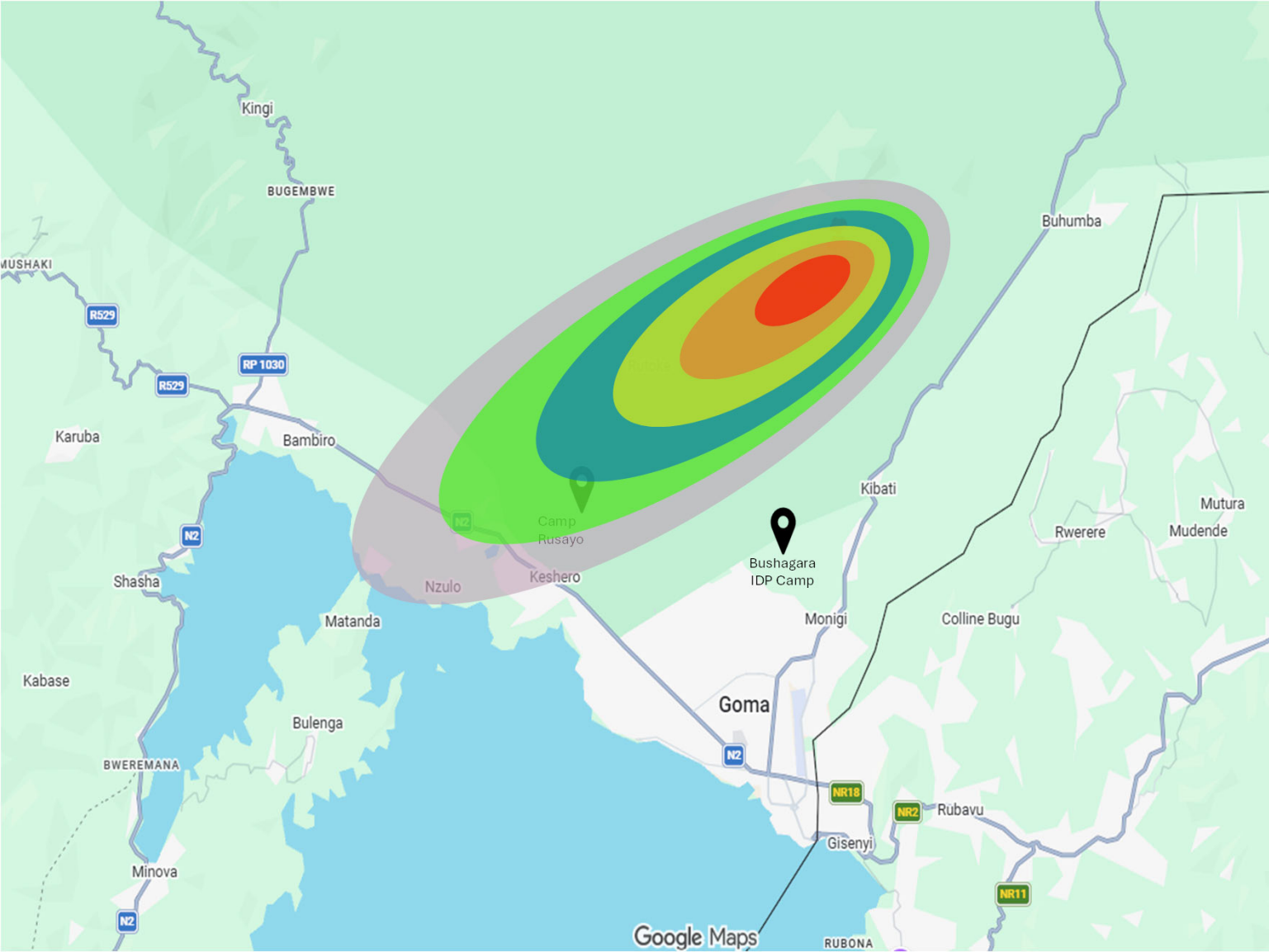
Mt. Niyaragongo  
Plume Dispersal  
1400 (E-day)

Wind at surface: Blowing to  
the WSW @ 6-8 kmh



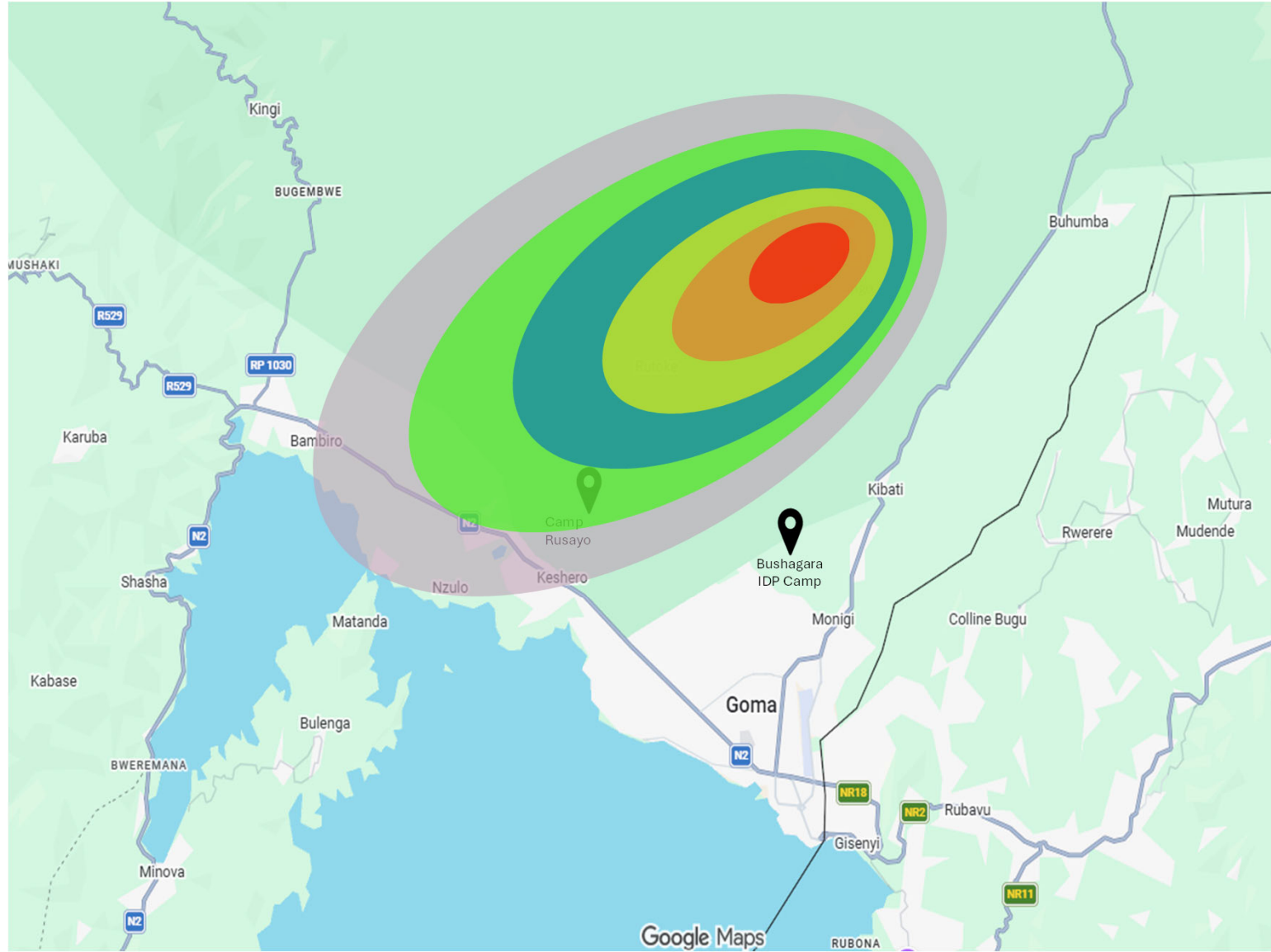
Mt. Niyaragongo  
Plume Dispersal  
1800 (E-day)

Wind at surface: Blowing to  
the WSW @ 7-10 kmh



Mt. Niyaragongo  
Plume Dispersal  
2200 (E-day)

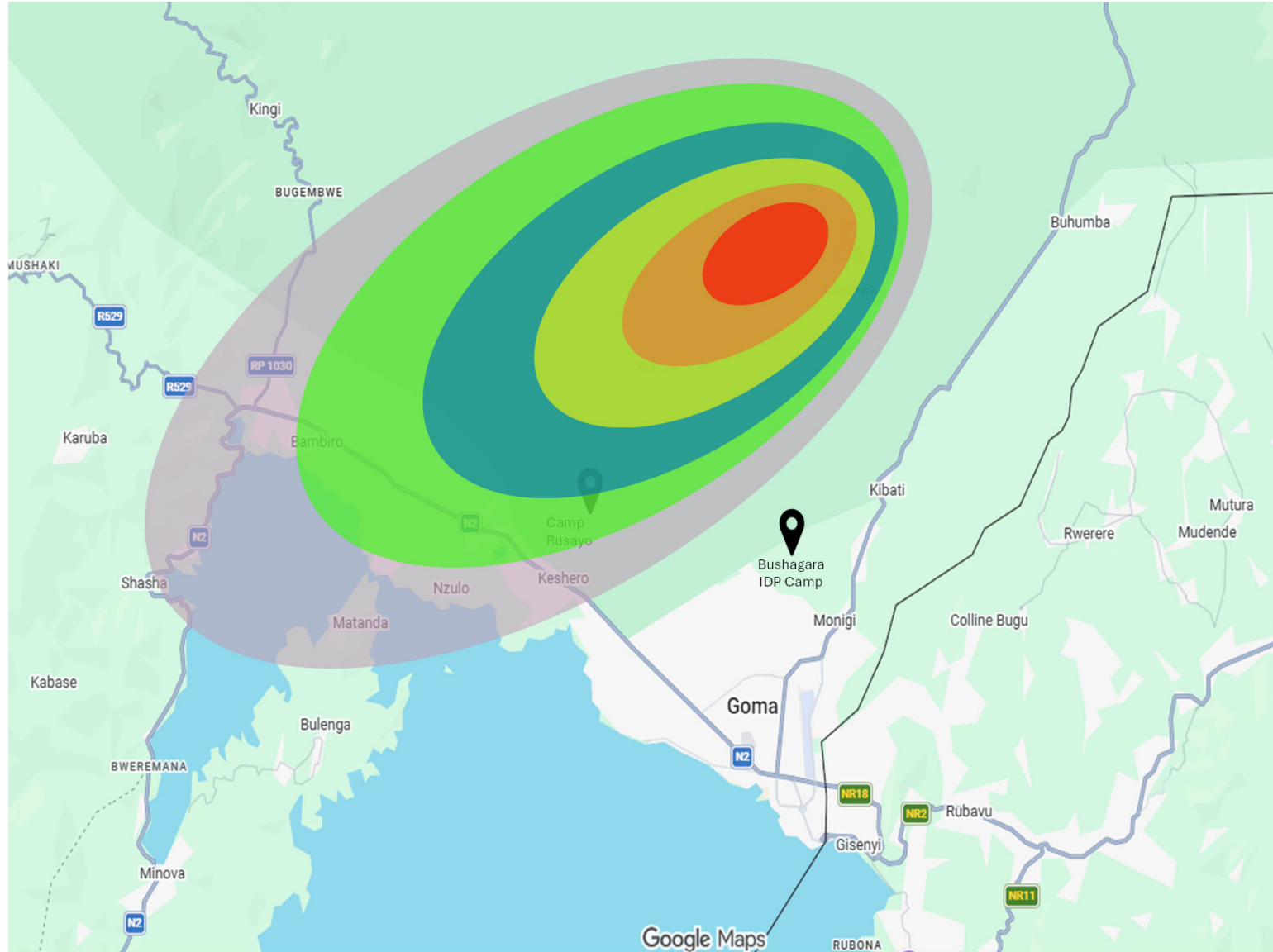
Wind at surface: Shifted  
slightly towards the west.  
Blowing to the WSW @ 7-10  
kmh



Mt. Niyaragongo  
Plume Dispersal  
0200 (E+1)

Eruption has ceased.  
Smoke and ash has reduced  
greatly, mainly produced  
from fires and minor  
collapses.

Wind at surface: Blowing to  
the WSW @ 7-10 kmh



Mt. Niyaragongo  
Plume Dispersal  
0800 (E+1)

Wind at surface: Shifted  
slightly back to the south.  
Blowing to the WSW @ 3-5  
kmh

