

# More Tools for the Mass Care Toolbox

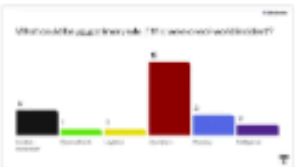
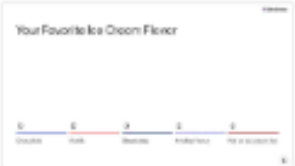
Michael Prasad, MA, CEM<sup>®</sup>

The Center for Emergency Management Intelligence Research





Select which slide to add



# Instructions to participate (all responses are anonymous)

Go to

# www.menti.com

Enter the code

# 1299 2507



Or use QR code



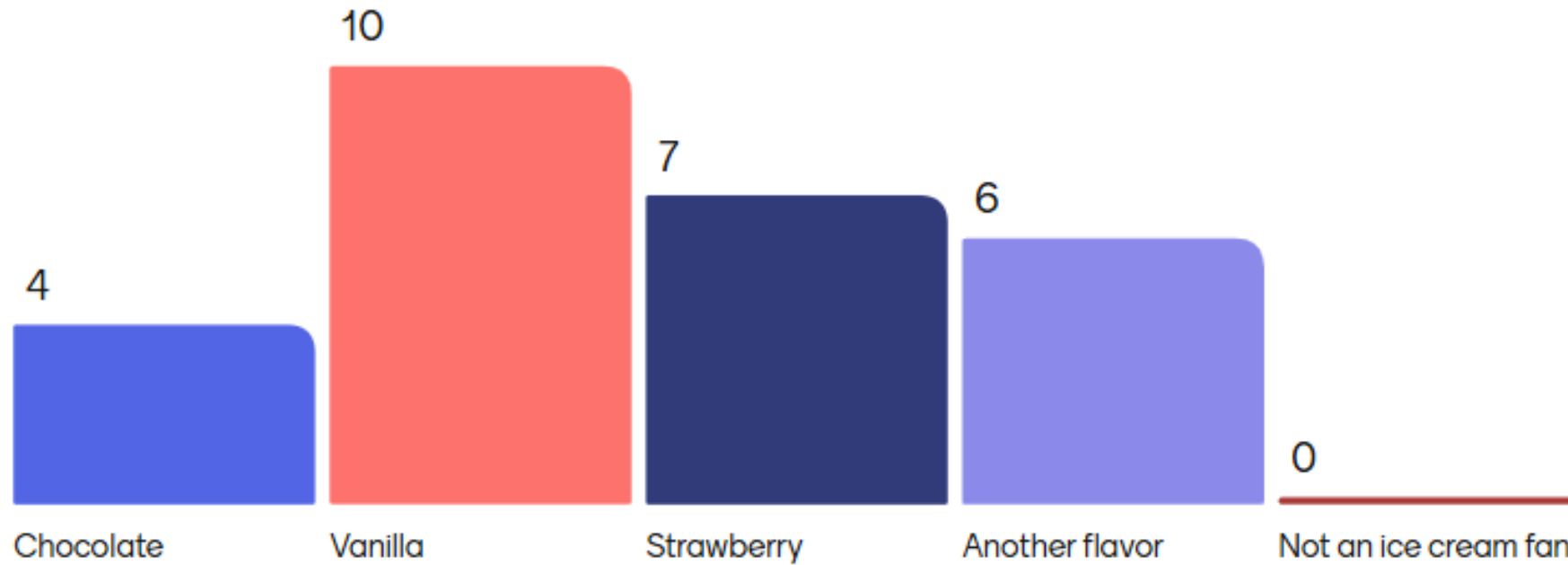


MP

Join at [menti.com](https://menti.com) | use code 1299 2507

Mentimeter

# Your Favorite Ice Cream Flavor



Menti

HDIAC 2026 TTX



Select which slide to add

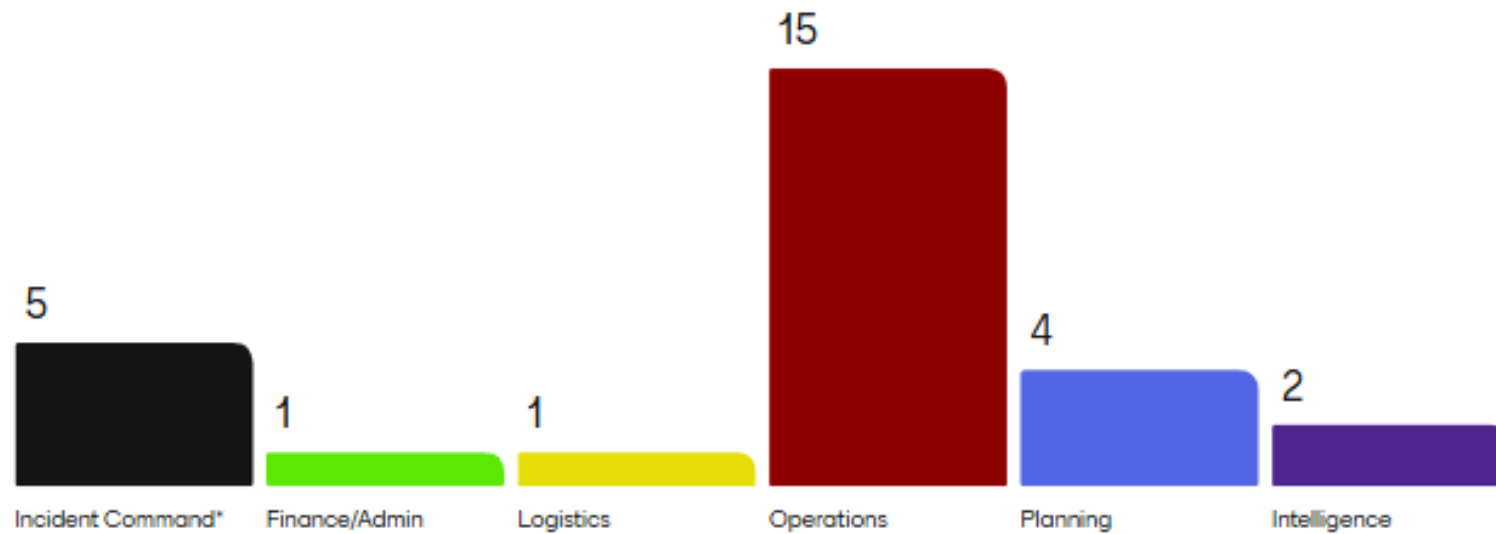
Instructions to participate (all responses are anonymous)

Your Favorite Ice Cream Flavor

What could be your primary role, if this were a real-world incident?



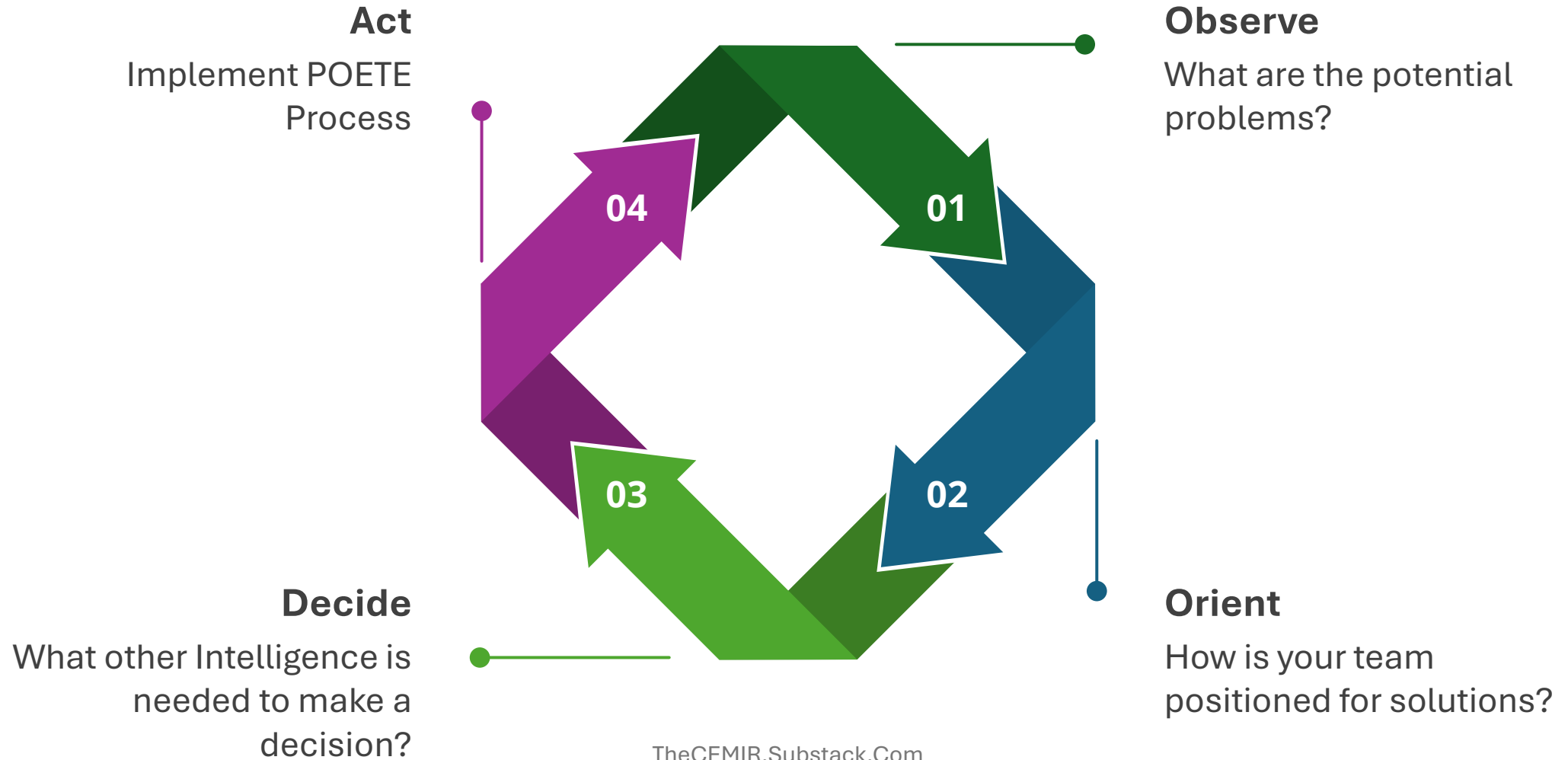
What could be your primary role, if this were a real-world incident?



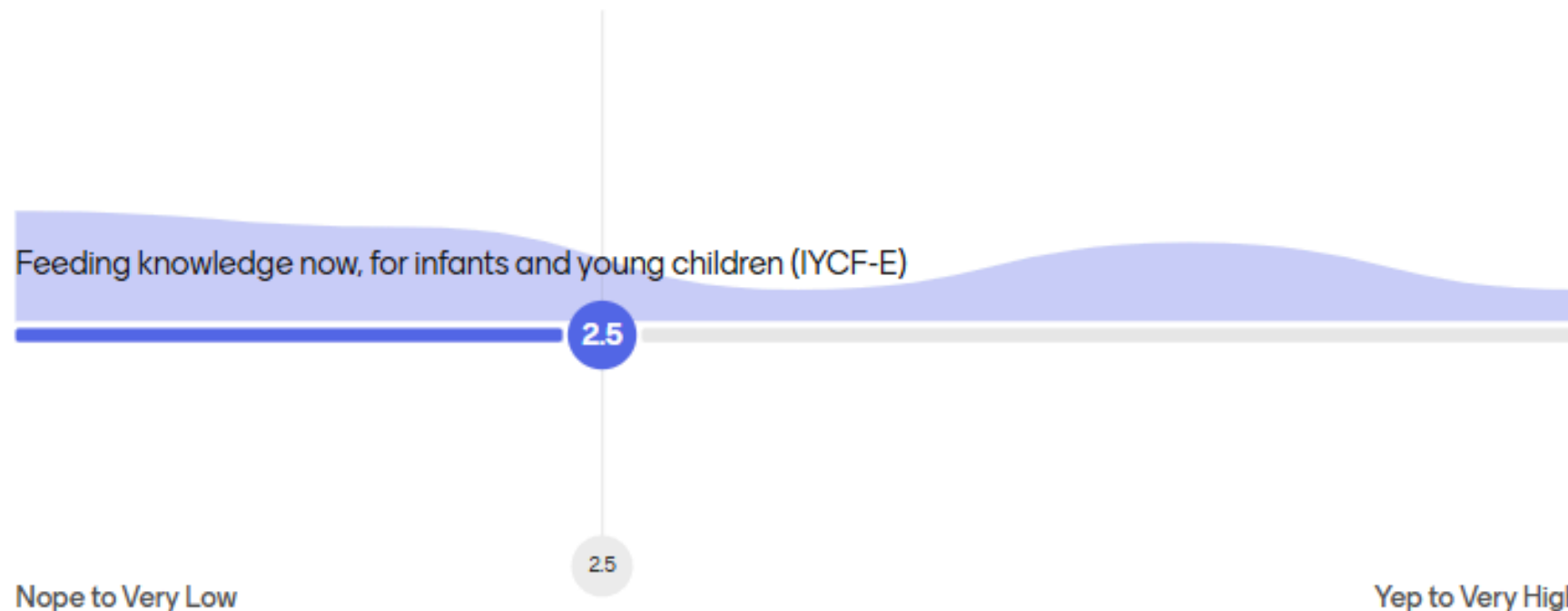
A QR code for the poll, with the text "menti.com 1299 2507" below it. At the bottom of the block, it says "28 of 28 responded" with a progress bar.

The Mentimeter poll interface. At the top, it says "Menti HDIAC 2026 TTX". Below that, it says "Select which slide to add" and shows a list of slides. The first slide is "Instructions to participants (also contains an overview)", the second is "Your Favorite Ice Cream Flavor", the third is "What could be your primary role, if this were a real-world incident?", and the fourth is "What is the most important aspect of the emergency response process?". The third slide is currently selected.

# OODA Loop



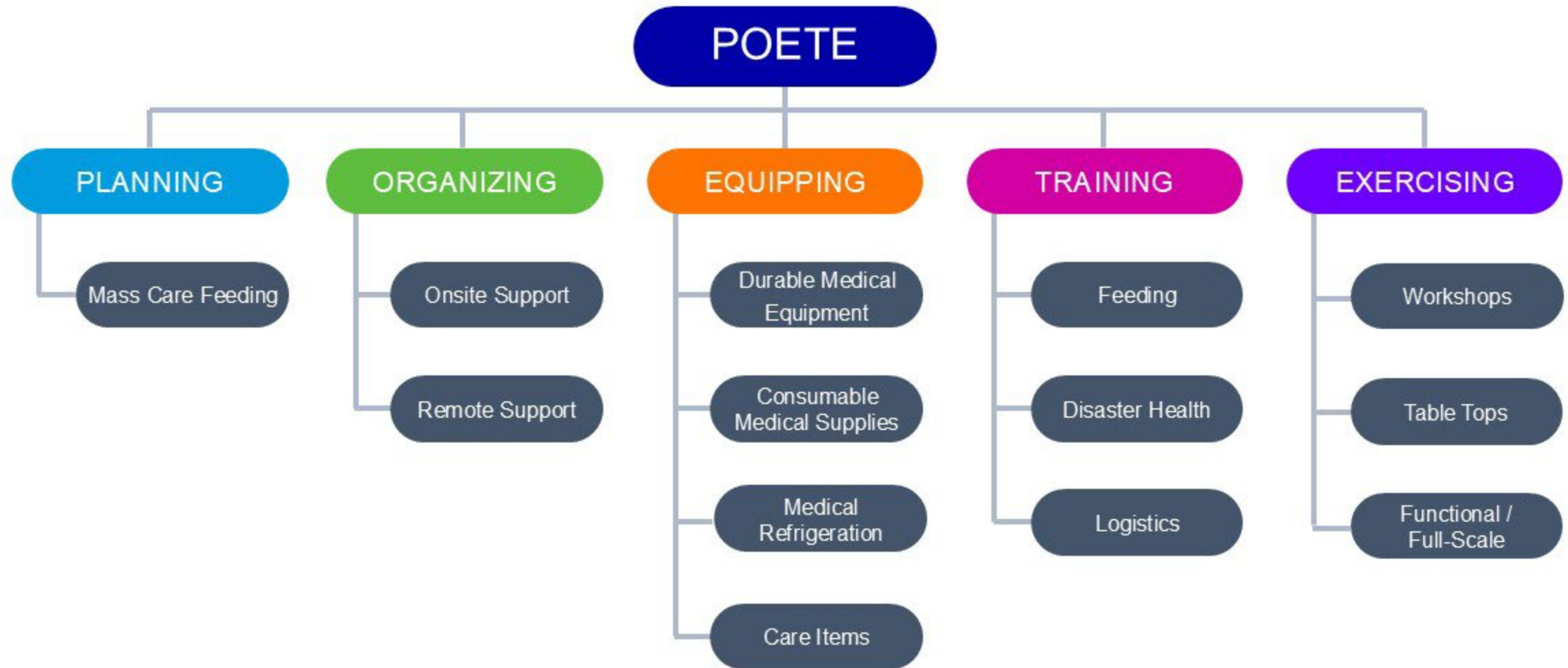
Where do you think you and your organization are, on the knowledge curve about mass care disaster feeding, especially for infants and young children?



Select which slide to add

- Includes to participate | improve (or enhance)
- Your Favorite Ice Cream Flavor
- What is the app that you use? (If you use one, what is it?)
- How do you think you are doing on the feeding knowledge curve?
- How do you think you are doing on the feeding knowledge curve?
- How do you think you are doing on the feeding knowledge curve?
- What is your knowledge of feeding support for feeding?

# POETE - Problem Solving



# Here is the Problem



# CMIST

Communication



Independence



Maintaining  
Health



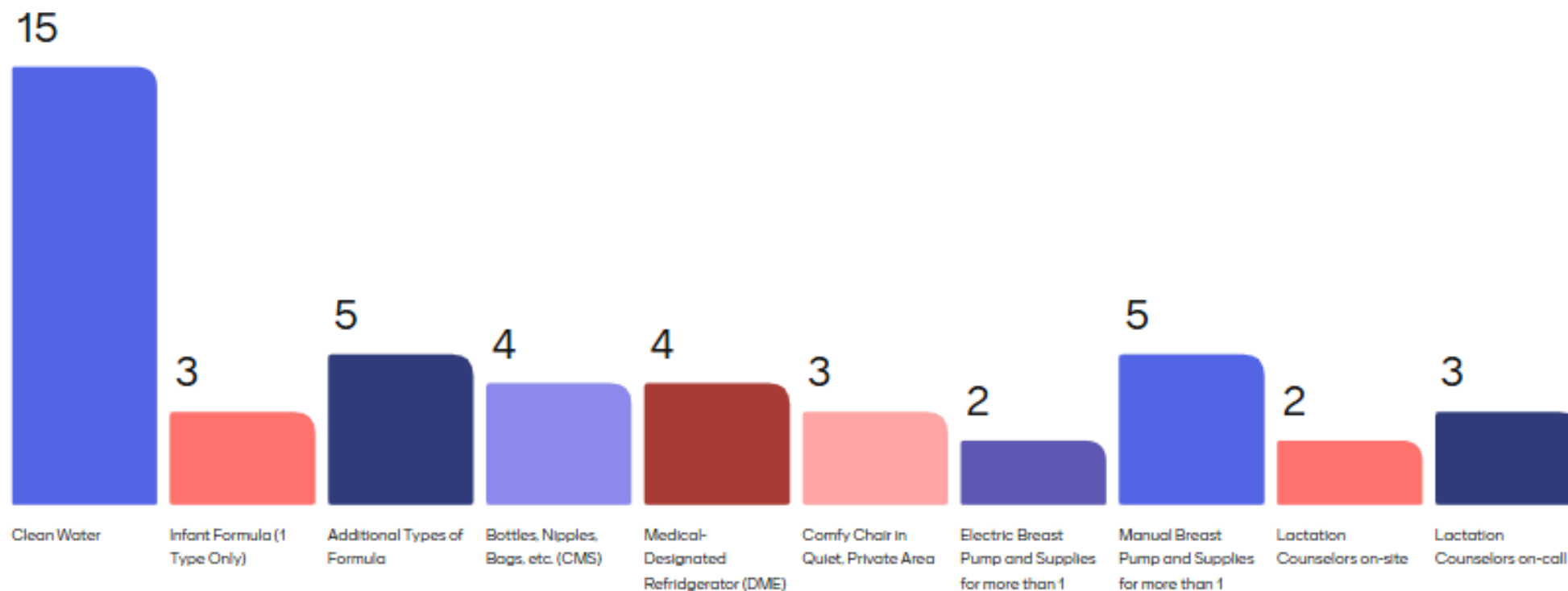
Support &  
Safety

Transportation



Source: <https://prepareky.com/accessible-resources/cmist-framework/>

# What do you have pre-staged at for depolymt, to support infant feeding?

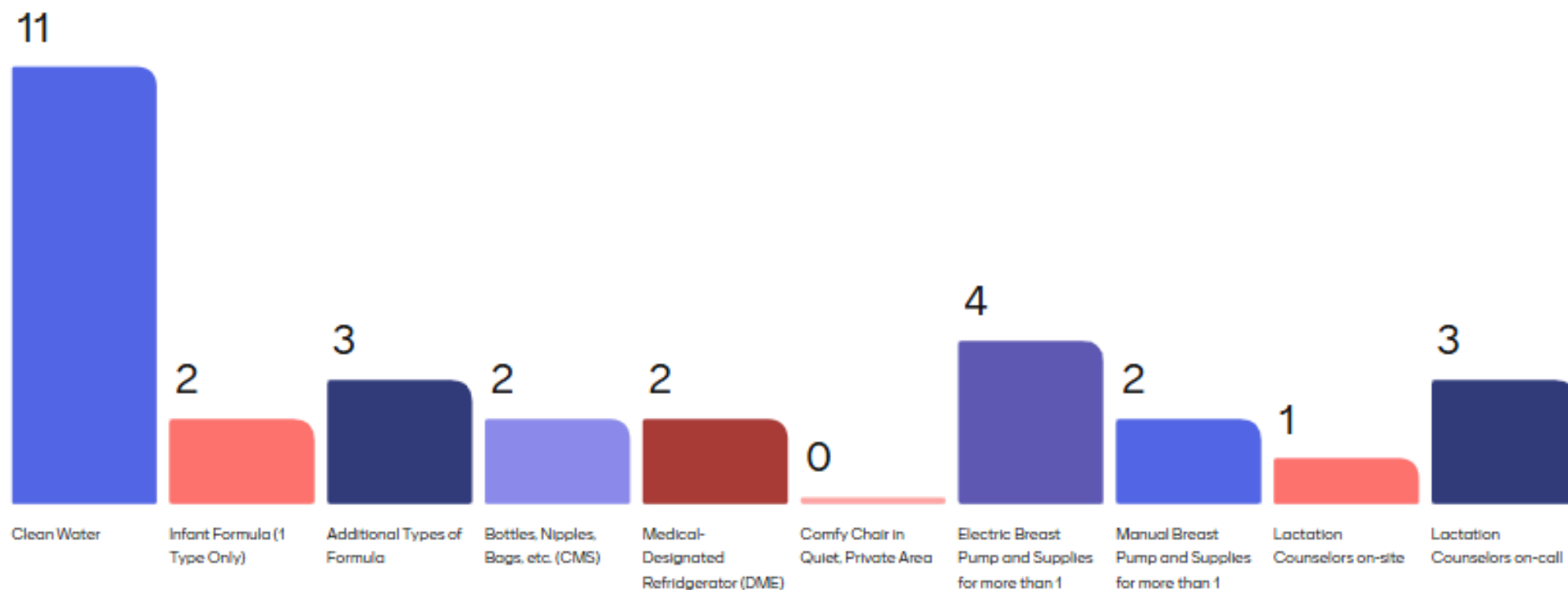


16 / 16

Select which slide to add

- Instructions to participants (also comes as a keynot)
- Your Favorite Ice Cream Flavor
- What could be appropriate for the event and why?
- How do you feel about the event so far?
- How do you feel about the event so far?
- What do you know about the event?

# What can you obtain via LOGISTICS on the SAME DAY to support infant feeding?



Menti HDIAC 2026 TTX

Select which slide to add

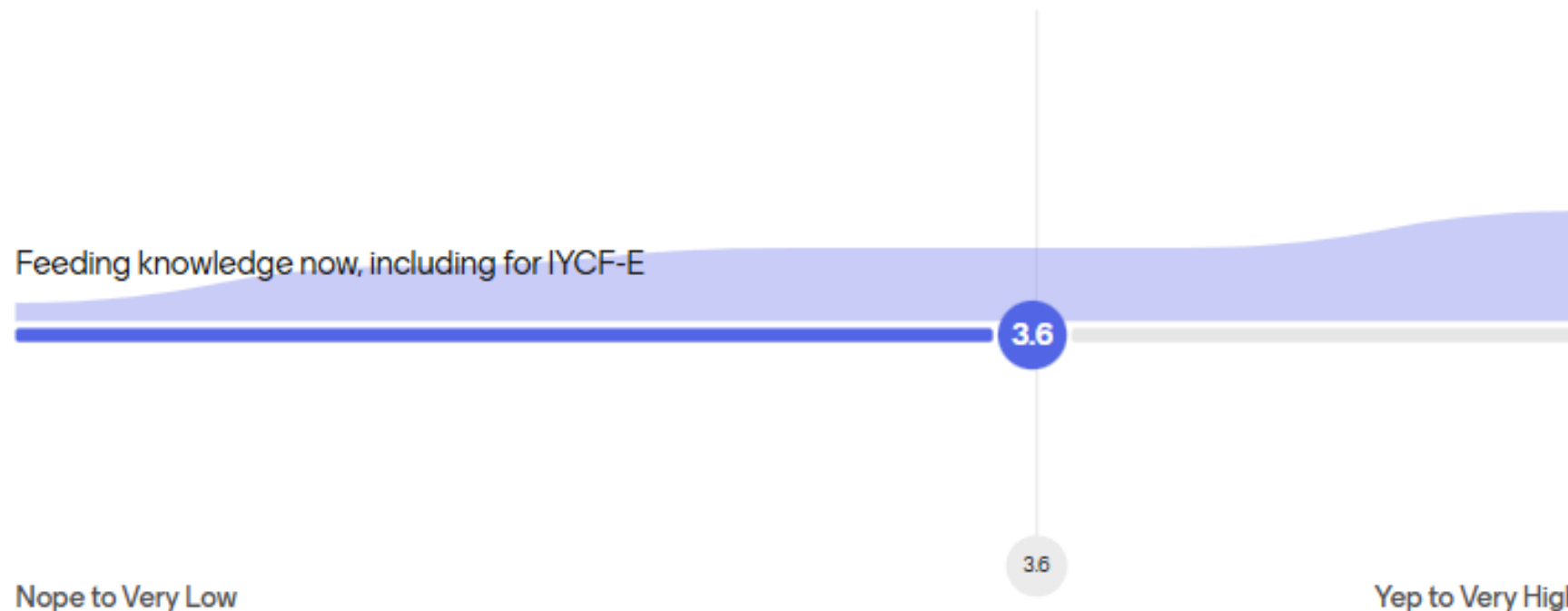
- Instructions to participants (also comes as a keynote)
- Your Favorite Ice Cream Flavor
- What could be appropriate for the event and why?
- What is your favorite type of food?
- What is your favorite type of food?
- What is your favorite type of food?
- What is your favorite type of food?
- What is your favorite type of food?

# Questions and Answers Time

Please use the Q&A section



Now, where do you think you and your organization are, on the knowledge curve about mass care feeding, especially IYCF-E?



18 / 18

Menti HDIAC 2026 TTX

Select which slide to add

- Instructions to participants (also contains a QR code)
- Your Favorite Ice Cream Flavor
- What could be appropriate for the event and why?
- How do you think you will be using the data from this survey?
- How do you think you will be using the data from this survey?
- How do you think you will be using the data from this survey?
- How do you think you will be using the data from this survey?
- How do you think you will be using the data from this survey?

For more information, please visit  
[www.bartondunant.com/pediatric-feeding](http://www.bartondunant.com/pediatric-feeding).

